



BIOMÉRIEUX

# VIDAS<sup>®</sup> EMERGENCY & CRITICAL CARE PANEL

FAST AND ACTIONNABLE RESULTS YOU CAN TRUST



PIONEERING DIAGNOSTICS

# High quality and cost-effective diagnostic ASSAYS for rapid and OPTIMIZED patient management

## EMERGENCY DEPARTMENT (ED)



## TRIAGE



## ADMITTED

## DISCHARGED



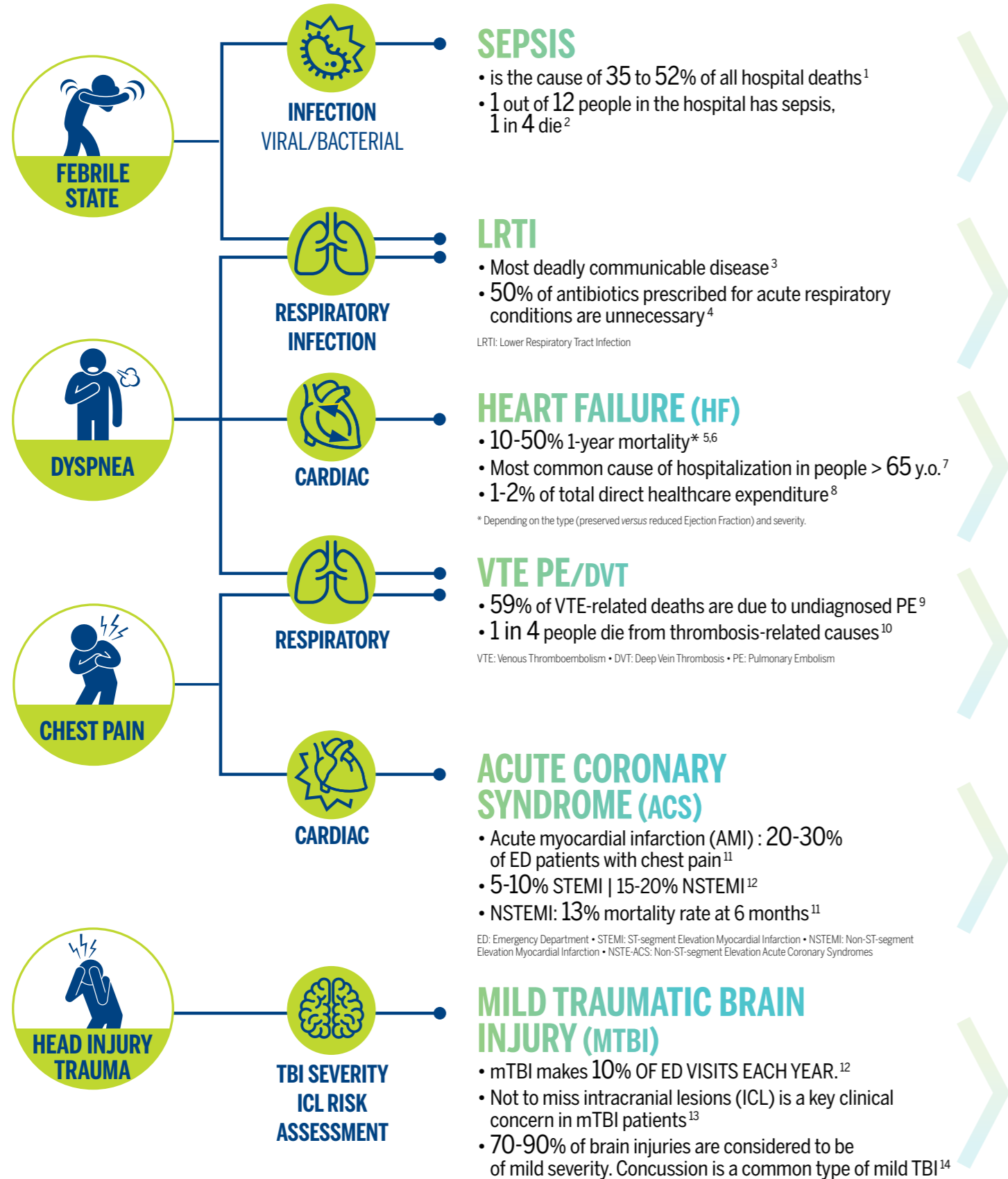
OR



### SYMPTOMS

### SUSPECTED DISEASES

### BIOMÉRIEUX SOLUTIONS



#### VIDAS® B·R·A·H·M·S·PCT™

Aids in the risk assessment for progression to sepsis and septic shock.<sup>15</sup>

PCT concentrations > 0.5 ng/mL may indicate risk of developing sepsis or septic shock.

#### VIDAS® B·R·A·H·M·S·PCT™

Aids in decision making on antibiotic therapy for patients with LRTI.<sup>15</sup>

The strong negative predictive value of PCT provides key information for antibiotic management.

#### VIDAS® NT-PROBNP2

Aid in the diagnosis of suspected heart failure.<sup>16</sup>

Confidently rule-out heart failure in acute settings.

#### VIDAS® D-DIMER EXCLUSION™ II

Safely exclude VTE in suspected patients.<sup>17</sup>

Quickly and confidently excludes DVT/PE in 30 -50% of suspected patients with - a low/intermediate or unlikely PTP (pretest probability).

#### VIDAS® HIGH SENSITIVE TROPONIN I

Accelerate patient triage with high diagnostic accuracy in only 2 hours.<sup>18</sup>

Actionable 2 hours algorithm to Rule in / rule out acute Myocardial infarction.

#### VIDAS® TBI (GFAP, UCH-L1)

Safely rules out ICL and helps you objectively determine the need for a head CT scan in mTBI patients.<sup>14</sup>

The powerful combination of GFAP and UCH-L1 biomarkers safely rules out intracranial lesions (ICL) and can reduce unnecessary CT scans. Helps clinicians perform fast, efficient triage in ED with confidence.



# VIDAS<sup>®</sup> EMERGENCY & CRITICAL CARE PANEL

## BECAUSE IT MAKES SENSE ON VIDAS<sup>®</sup>

**Comprehensive  
emergency  
panel** on a single  
instrument



**24/7**  
On-demand  
automated  
testing



**Fast  
& Simple  
results**

**Easy to  
perform**



**All-inclusive  
kits, limited  
calibrations  
and controls**

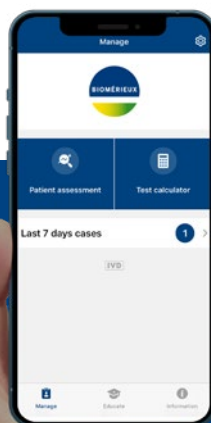
Discover bioMérieux range of clinical booklets for diagnostics support on <https://www.biomerieux-diagnostics.com/clinician-booklets>

Parameter	Reference	Code	Sample Volume	Test validated using	Test time (minutes)	Measurement Range of interpretation
<b>B.R.A.H.M.S PCT<sup>™</sup></b>	30450 30450-30	PCT	200µL	Serum, Plasma (Hep.)	20	0.05 - 200 ng/mL
<b>NT-proBNP2</b>	30458 30458-30	PBN2	200µL	Serum, Plasma (Hep.)	20	15 - 25,000pg/mL
<b>High sensitive Troponin I</b>	415386 415386-30	TNHS	200µL	Serum, Plasma (Hep.)	20	4.9 - 40,000pg/mL
<b>Myoglobin</b>	30446	MYO	150µL	Serum, Plasma (Hep.)	15	5-1,000 µg/L
<b>CK-MB</b>	30421	CKMB	250µL	Serum, Plasma (Hep., EDTA)	30	0.8 - 300 ng/mL
<b>VIDAS<sup>®</sup> D-Dimer Exclusion<sup>™</sup> II</b>	30455-02 30455-30	DEX2	200µL	Plasma (Cit.)	20	45 - 10,000 ng/mL (FEU)
<b>TBI (GFAP, UCH-L1)</b>	423615-30	GFAP UCH-L1	200µL	Serum	39	22 pg/mL 327 pg/mL

REFERENCES **1.** Liu, JAMA 2014. **2.** Rudd KE et al., Global, regional, and national sepsis incidence and mortality, 1990-2017: analysis for the Global Burden of Disease Study, Lancet 2020: 395: 200-11 **3.** WHO. **4.** Fleming-Dutra KE, et al. JAMA. 2016 May 3;315(17):1864-73 **5.** P. Ponikowski et al. ESC Heart Failure 2014; 1: 4-25. **6.** M.R. Cowie et al. ESC Heart Failure 2014; 1: 110-145. **7.** Azad N, Lemay G. JGC. 2014; 11(4): 329-337. **8.** M. R. Cowie et al. ESC Heart Failure 2014; 1: 110-145. **9.** Cohen AT, Agnelli G, Thromb Haemost. 2007; 98: 756-64. **10.** <http://www.worldthrombosisday.org> (2015) **11.** Roffi M, et al. Eur Heart J. 2016; 37: 267-315. **12.** Peterson B, Zhou H, Thomas KE, Daugherty J. CDC Surveillance Report 2017 **13.** Levin H, Lancet Neurol 2015 **14.** VIDAS<sup>®</sup> TBI Package Insert (or IFU) last version as per IVDR approval. **15.** VIDAS<sup>®</sup> B.R.A.H.M.S PCT<sup>™</sup> Package Insert or IFU last version as per IVDR approval. **16.** VIDAS<sup>®</sup> NT-proBNP2 Package Insert or IFU last version as per IVDR approval. **17.** VIDAS<sup>®</sup> D-Dimer Exclusion<sup>™</sup> II Package Insert or IFU last version as per IVDR approval. **18.** VIDAS<sup>®</sup> High Sensitive Troponin I Package Insert or IFU last version as per IVDR approval

FEU: Fibrinogen Equivalent Units

Some of these reagents have not yet obtained regulatory clearance in some countries and some references may vary according the country. Please contact your local bioMérieux representative for further information and product availability.



## MYACUTECASE<sup>™</sup>

Confidence.  
Convenience.  
Efficiency.



DISCOVER FREE APP  
FOR OPTIMIZED USE AND  
AID IN THE INTERPRETATION  
OF THE VIDAS<sup>®</sup> EMERGENCY  
& CRITICAL CARE ASSAYS.